

Product Number:	102153
Lot Number:	503955
Expiration:	2-Sep-2024
Platform(s):	HD-X & SR-X



Data below represents results generated on the Simoa® HD-X Analyzer.

Component	Part Number	Lot Number
Bead Reagent	102141	325804
Detector Reagent	102143	325901
SBG Reagent	102145	328214
Sample Diluent	102147	326306
Calibrators	102150	325505
Control 1	102151	325506
Control 2	102152	325506
SBG Diluent (SR-X) †	103158	N/A ¹
RGP Reagent	103159	N/A ¹

¹ SBG Diluent (SR-X) and RGP reagent are not Kit Lot Specific

† Specific for use on the SR-X platform - refer to the Simoa® Neuro 4-Plex A SR-X Kit Instructions (KI-0031).

Release Materials

Tau			
	Lot	Result (pg/mL)	Spec. Range (pg/mL)
Control 1	325506	2.65	1.98 - 2.97
Control 2	325506	104	77.6 - 116
Panel 1	308106	30.9	25.3 - 37.9
Panel 2	309707	2.57	2.06 - 3.37
Panel 3	311701	88.6	59.2 - 88.8

NF-light®			
	Lot	Result (pg/mL)	Spec. Range (pg/mL)
Control 1	325506	5.83	4.54 - 8.09
Control 2	325506	592	470 - 705
Panel 1	308106	10.6	7.63 - 13.2
Panel 2	309707	7.93	6.02 - 9.14
Panel 3	311701	491	354 - 597

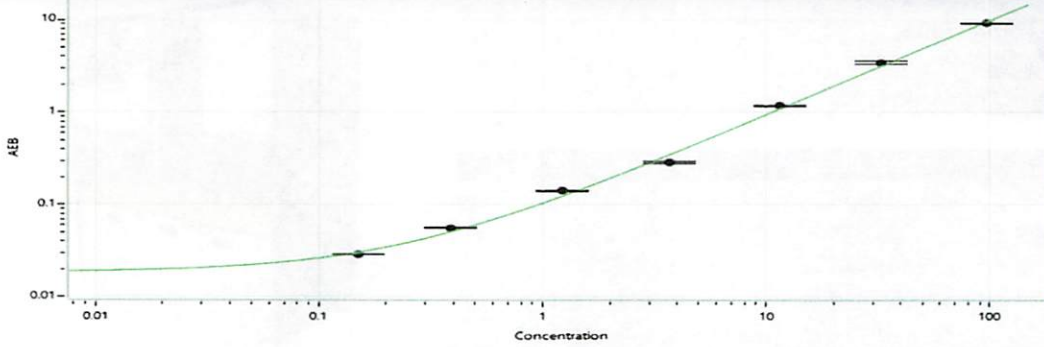
GFAP®			
	Lot	Result (pg/mL)	Spec. Range (pg/mL)
Control 1	325506	25.0	20.0 - 30.1
Control 2	325506	1276	995 - 1492
Panel 1	308106	49.2	32.8 - 55.2
Panel 2	309707	91.2	64.9 - 97.4
Panel 3	311701	1137	872 - 1308

UCHL1®			
	Lot	Result (pg/mL)	Spec. Range (pg/mL)
Control 1	325506	126	88.8 - 181
Control 2	325506	12149	10006 - 15009
Panel 1	308106	81.2	40.6 - 142
Panel 2	309707	103	78.5 - 143
Panel 3	311701	5688	5347 - 8061

Ranges shown are generated internally for new lot release only. Customer should generate their own control ranges.

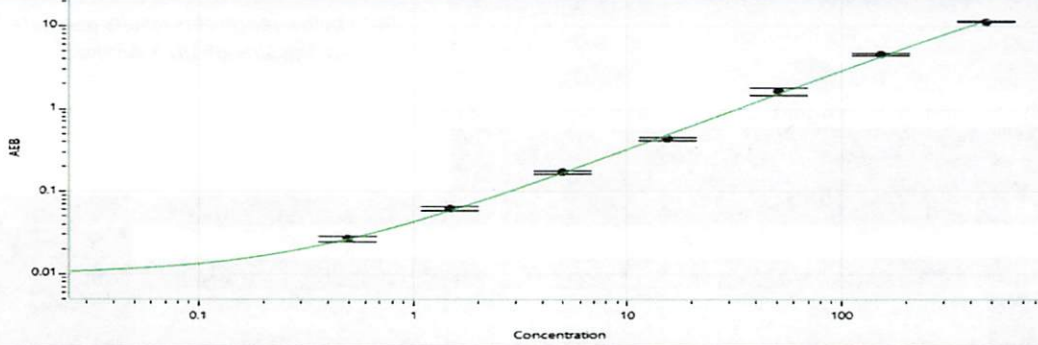
Review/Approval Sonia Khillan QC Sonia R. Khan 16 NOV 2023
Name Title Signature/Date

Tau Calibration Curve



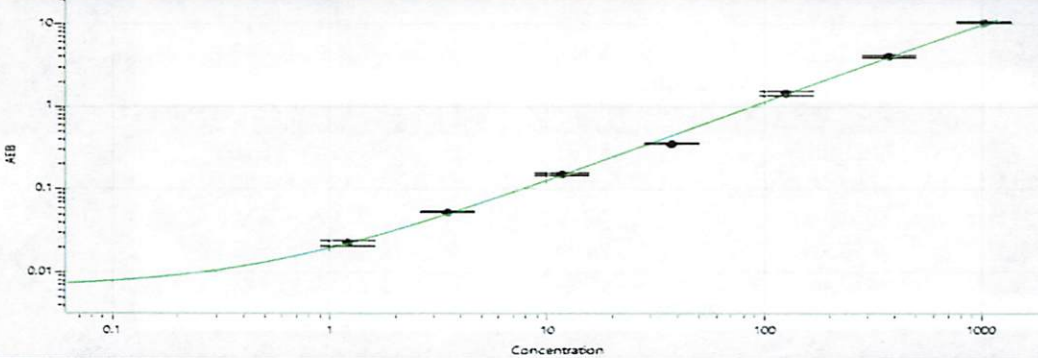
Calibrator Levels (pg/mL)	
A	0.000
B	0.151
C	0.386
D	1.23
E	3.70
F	11.5
G	32.3
H	96.3

NF-light® Calibration Curve



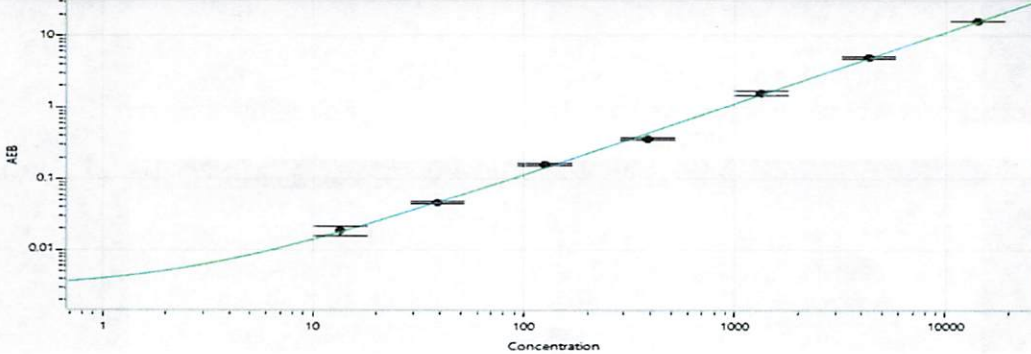
Calibrator Levels (pg/mL)	
A	0.000
B	0.496
C	1.48
D	5.00
E	15.5
F	50.4
G	153
H	467

GFAP® Calibration Curve



Calibrator Levels (pg/mL)	
A	0.000
B	1.21
C	3.48
D	11.7
E	37.6
F	126
G	375
H	1019

UCHL1® Calibration Curve



Calibrator Levels (pg/mL)	
A	0.000
B	13.5
C	38.7
D	126
E	387
F	1337
G	4298
H	14194