

Product Number:	100198
Lot Number:	503557
Expiration:	3-Dec-2022
Platform(s):	HD-1/HD-X & SR-X



Data below represents results generated on the Simoa® HD-1 Analyzer.

Component	Part Number	Lot Number
Bead Reagent	100815	221508
Detector Reagent	100816	212701
SBG Reagent	100817	221611
Sample Diluent	103204	221612
Calibrator Diluent	100829	221613
Calibrator Concentrate	100828	133714
SBG Diluent (SR-X) †	103158	N/A ¹
RGP Reagent	103159	N/A ¹

¹ These components are not Kit Lot Specific

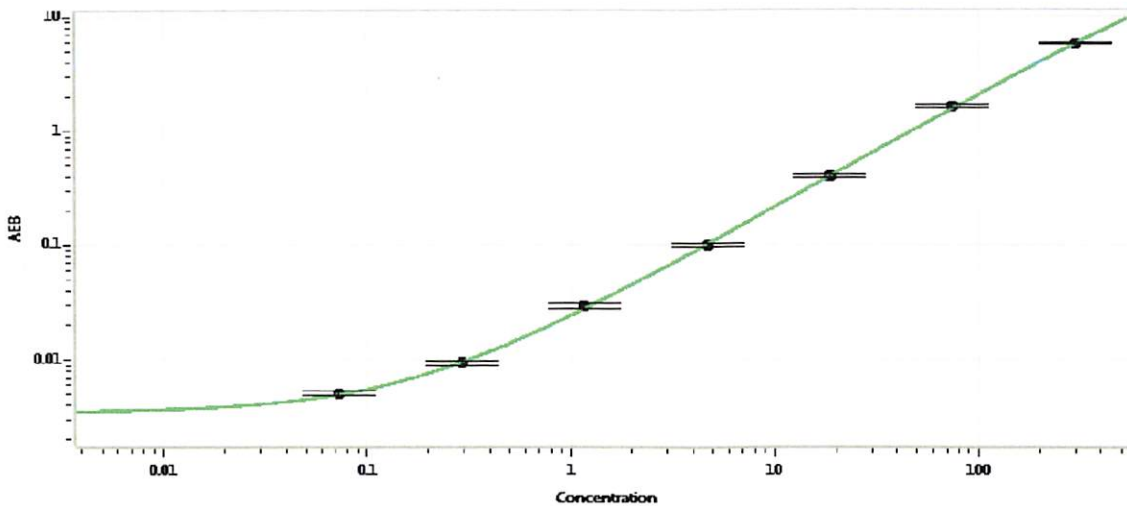
† Specific for use on the SRX platform - refer to the Simoa® IL-8 SR-X Kit Instructions (KI-0092).

Release Materials*			
	Lot	Result (pg/mL)	Spec. Range (pg/mL)
Control 1	133714	14.0	11.3 - 18.8
Control 2	133714	237	188 - 313
Panel 1	032901	5.51	2.17 - 6.98
Panel 2	032901	46.2	24.2 - 58.4
Panel 3	033005	591	355 - 671

* Ranges shown are generated internally for new lot release only. Customer should generate their own control ranges.

Calibrator Concentrate Value Assignment (pg/mL)	4871 pg/mL
---	------------

Calibration Curve



Calibrator Levels (pg/mL)	
A	0.000
B	0.073
C	0.293
D	1.17
E	4.69
F	18.8
G	75.0
H	300

Review/Approval: Sonia Khillan Name, QC Manager Title, Sonia Khillan / 08 SEP 2022 Signature/Date