

Product Number:	102233
Lot Number:	503419
Expiration:	8-Oct-2022
Platform(s):	HD-1/HD-X & SRX

Component	Part Number	Lot Number
Bead Stock	102223	209811
Detector Stock	102224	209901
Calibrator Concentrate	102229	209906
Calibrator Diluent	102225	209905
Sample Diluent	102226	209902

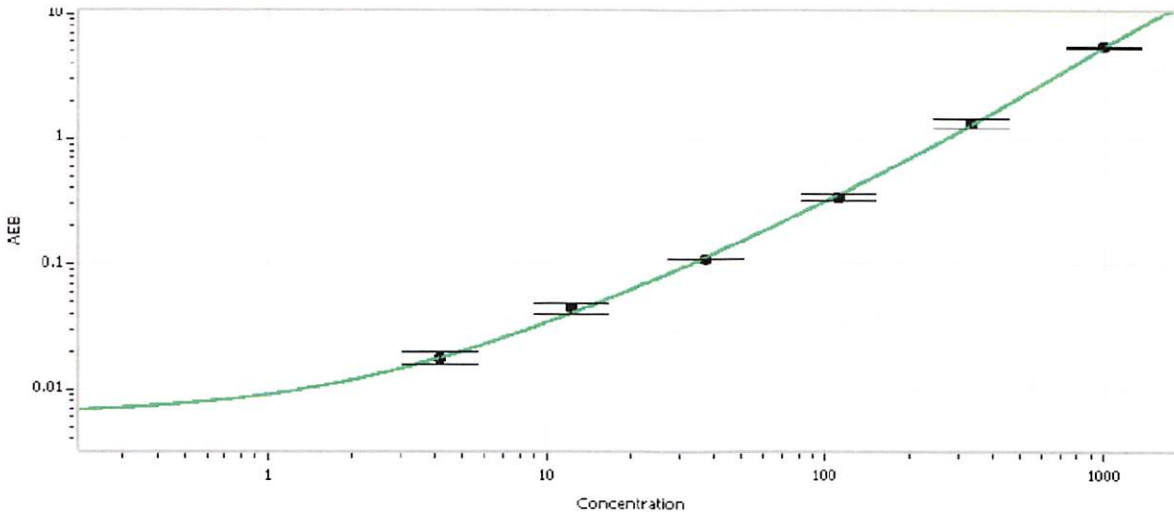
Generic Components - Included With Kit But Not Lot Number Specific	
Discovery Bead Diluent	101954
Discovery Detector Diluent	101955
Discovery SBG Diluent	101956
Discovery SBG Stock	103297
RGP Reagent	103159

Calibrator Concentrate Target Value (ng/mL)	20
---------------------------------------------	----



Data below represents results generated on the Simoa® HD-1 / HD-X / SR-X Analyzer.

Calibration Curve



Calibrator Levels (pg/mL)	
A	0.000
B	4.12
C	12.3
D	37.0
E	111
F	333
G	1000

Review/Approval: Matt Smart Name Director, QC Title Matt 09Jun2022 Signature/Date