

| | |
|-----------------|--------------------|
| Product Number: | 101622 |
| Lot Number: | 503016 |
| Expiration: | 25-Feb-2022 |
| Platform(s): | HD-1 / HD-X & SR-X |



Data below represents results generated on the Simoa™ HD-X Analyzer.

| Component | Part Number | Lot Number |
|------------------------|-------------|------------------|
| Bead Reagent | 101624 | 117701 |
| Detector Reagent | 101623 | 117806 |
| SBG Reagent | 101625 | 117811 |
| Sample Diluent | 103732 | 113509 |
| Calibrator Diluent | 101627 | 115423 |
| Calibrator Concentrate | 100652 | 005601 |
| RGP Reagent | 103159 | N/A ¹ |

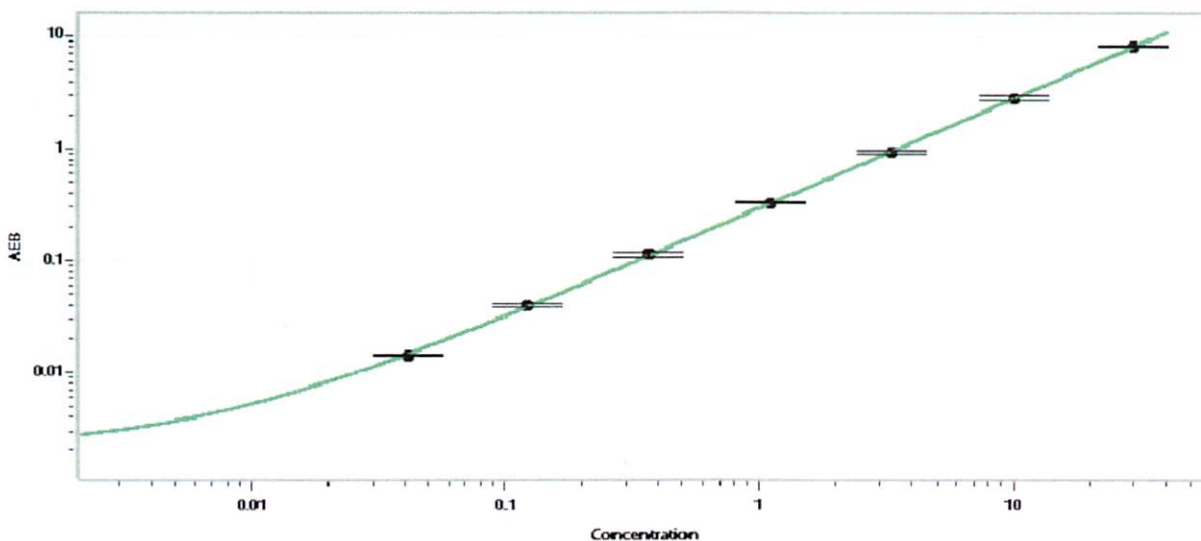
¹ RGP is not Kit Lot Specific

| Release Materials* | | | |
|--------------------|--------|----------------|--------------------|
| | Lot | Result (pg/mL) | Mean Range (pg/mL) |
| Control 1 | 108406 | 1.45 | 1.12-2.04 |
| Control 2 | 108406 | 23.6 | 17.2-25.9 |
| Panel 1 | 029301 | 47.0 | 39.8-59.7 |
| Panel 2 | 029401 | 5.38 | 4.35-6.53 |
| Panel 3 | 029301 | 1.60 | 1.22-1.82 |

* Ranges shown are generated internally for new lot release only. Customer should generate their own control ranges.

| | |
|---|-----|
| Calibrator Concentrate Value Assignment (pg/mL) | 645 |
|---|-----|

Calibration Curve



| Calibrator Levels (pg/mL) | |
|---------------------------|-------|
| A | 0.000 |
| B | 0.041 |
| C | 0.123 |
| D | 0.370 |
| E | 1.11 |
| F | 3.33 |
| G | 10.0 |
| H | 30.0 |

Review/Approval

Junpil Park

QC Supervisor

Name

Title

Signature/Date

[Signature] 01 Jul 2021