

| | |
|-----------------|-------------|
| Product Number: | 102153 |
| Lot Number: | 502665 |
| Expiration: | 23-Nov-2021 |
| Platform(s): | HD-X & SR-X |

| Component | Part Number | Lot Number |
|---------------------|-------------|----------------------------|
| Bead Reagent | 102141 | 035006 |
| Detector Reagent | 102143 | 035110 |
| SBG Reagent | 102145 | 034416 |
| Sample Diluent | 102147 | 034415 |
| Calibrators | 102150 | A-F: 035601 G-H: 102501 |
| Control 1 | 102151 | 035602 |
| Control 2 | 102152 | 035602 |
| SBG Diluent (SR-X)† | 103158 | N/A ¹ |
| RGP Reagent | 103159 | N/A ¹ |

¹ RGP is not Kit Lot Specific

† Specific for use on the SR-X platform - refer to the Simoa™ Neuro 4-Plex A SR-X Kit Instructions (KI-0031).



Data below represents results generated on the Simoa™ HD-X Analyzer.

Release Materials


| Tau | | | |
|-----------|--------|----------------|--------------------|
| | Lot | Result (pg/mL) | Mean Range (pg/mL) |
| Control 1 | 035602 | 2.03 | 1.53-2.29 |
| Control 2 | 035602 | 82.7 | 62.1-93.2 |
| Panel 1 | 921101 | 1.22 | 0.419-2.10 |
| Panel 2 | 921102 | 1.06 | 0.311-1.73 |
| Panel 3 | 921103 | 24.6 | 14.4-38.7 |

| NF-light® | | | |
|-----------|--------|----------------|--------------------|
| | Lot | Result (pg/mL) | Mean Range (pg/mL) |
| Control 1 | 035602 | 11.0 | 8.84-13.3 |
| Control 2 | 035602 | 552 | 439-659 |
| Panel 1 | 921101 | 10.2 | 8.43-12.6 |
| Panel 2 | 921102 | 7.99 | 7.00-10.5 |
| Panel 3 | 921103 | 155 | 151-240 |

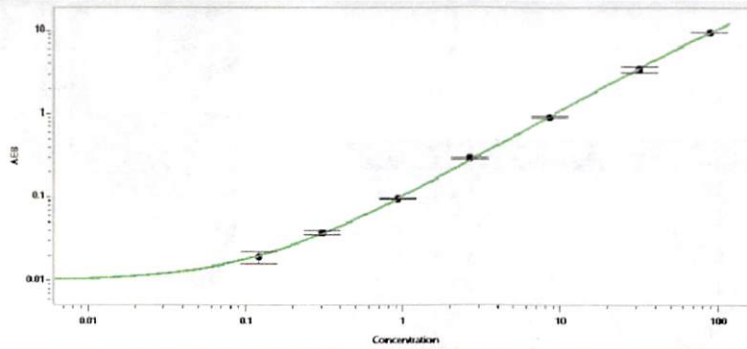
| GFAP® | | | |
|-----------|--------|----------------|--------------------|
| | Lot | Result (pg/mL) | Mean Range (pg/mL) |
| Control 1 | 035602 | 27.2 | 21.7-32.5 |
| Control 2 | 035602 | 1194 | 909-1363 |
| Panel 1 | 921101 | 79.5 | 66.1-99.2 |
| Panel 2 | 921102 | 49.4 | 45.7-68.5 |
| Panel 3 | 921103 | 950 | 927-1391 |

| UCHL1® | | | |
|-----------|--------|----------------|--------------------|
| | Lot | Result (pg/mL) | Mean Range (pg/mL) |
| Control 1 | 035602 | 258 | 203-304 |
| Control 2 | 035602 | 14701 | 11022-16533 |
| Panel 1 | 921101 | 122 | 64.3-140 |
| Panel 2 | 921102 | 114 | 52.9-161 |
| Panel 3 | 921103 | 3389 | 1662-5492 |

Ranges shown are generated internally for new lot release only. Customer should generate their own control ranges.

| | | | |
|-----------------|-------------|---------------|---|
| Review/Approval | Junpil Park | QC Supervisor |  29 Jan 2021 |
| | Name | Title | Signature/Date |

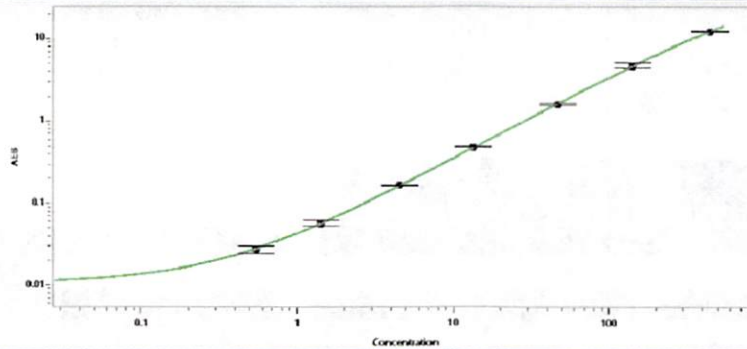
Tau Calibration Curve



Calibrator Levels (pg/mL)

| | |
|---|-------|
| A | 0.000 |
| B | 0.120 |
| C | 0.308 |
| D | 0.924 |
| E | 2.64 |
| F | 8.55 |
| G | 31.3 |
| H | 88.1 |

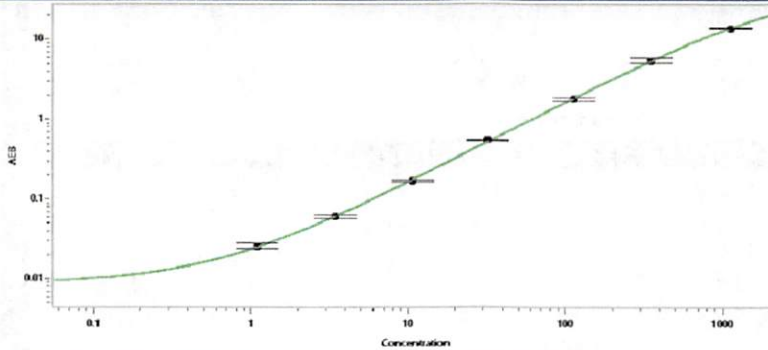
NF-light® Calibration Curve



Calibrator Levels (pg/mL)

| | |
|---|-------|
| A | 0.000 |
| B | 0.545 |
| C | 1.41 |
| D | 4.52 |
| E | 13.3 |
| F | 47.3 |
| G | 142 |
| H | 443 |

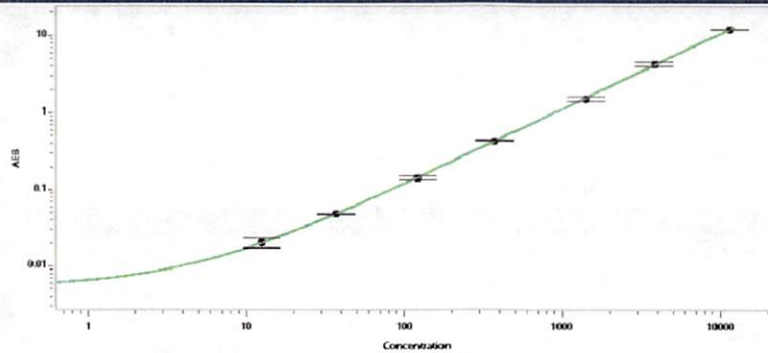
GFAP® Calibration Curve



Calibrator Levels (pg/mL)

| | |
|---|-------|
| A | 0.000 |
| B | 1.09 |
| C | 3.44 |
| D | 10.7 |
| E | 31.8 |
| F | 113 |
| G | 348 |
| H | 1123 |

UCHL1® Calibration Curve



Calibrator Levels (pg/mL)

| | |
|---|-------|
| A | 0.000 |
| B | 12.5 |
| C | 36.9 |
| D | 122 |
| E | 371 |
| F | 1409 |
| G | 3790 |
| H | 11494 |