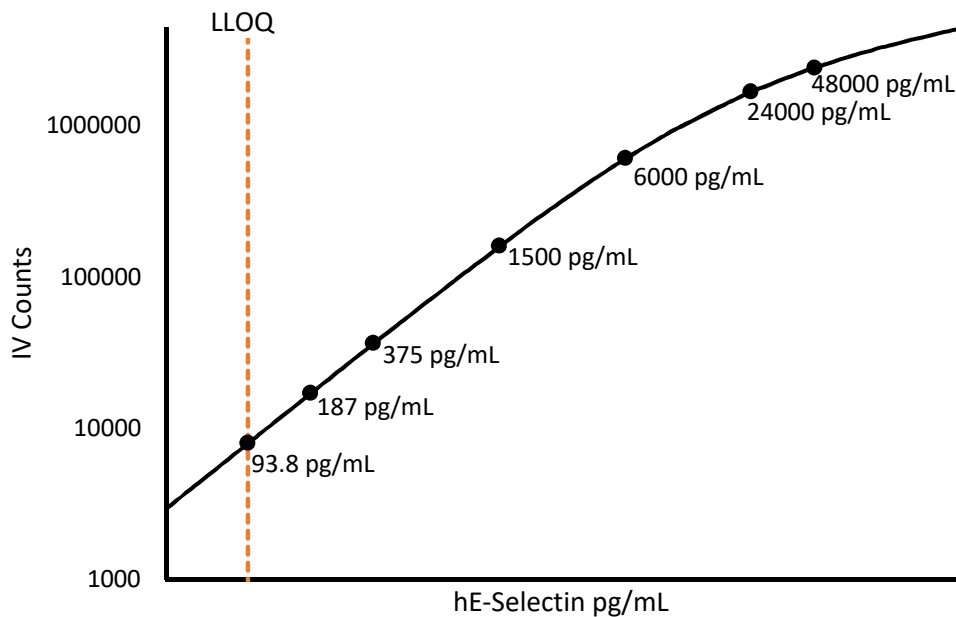


Description – E-Selectin

E-selectin is a selectin cell adhesion molecule—a single-chain transmembrane glycoprotein. It is expressed on vascular endothelial cells in response to IL-1β and TNFα. E-selectin plays a significant role in inflammation by mediating the initial attachment of circulating leukocytes to the blood vessel wall. E-selectin directly interacts with tumor cells and may influence metastasis, thus a molecule of interest for studying cancer.

Calibration Curve: Calibrator concentrations and Lower Limit of Quantification are depicted in the figure below. This standard curve is for demonstration purposes; end users should prepare a standard curve for each assay run.



Minimum Required Dilution (MRD)

| | |
|---|-----------------------|
| Diluted Sample volume (1:25 Dilution)* | 50 µL per measurement |
|---|-----------------------|

*See Kit Instructions for details

Endogenous Serum and Plasma Readings: Healthy EDTA plasma (n=5) and serum (n=5) samples were measured.

| | |
|---------------------|-------------|
| % Above LOD | 100% |
| % Above LLOQ | 100% |

Assay Range: The upper end of the dynamic range is equal to the top calibrator concentration multiplied by MRD.

| | |
|--------------------------------|-----------------------|
| Analytical LLOQ | 93.8 pg/mL |
| Functional LLOQ (x MRD) | 2345 pg/mL |
| LOD | 10.7 pg/mL |
| Assay Range | 0 – 1200 ng/mL |

Note: Data described were developed during assay development. Under different assay conditions, assay may perform differently than shown. For complex matrices such as serum or plasma, assay diluent optimization (for example by adding blocking agents) may improve performance of these matrices in this assay.