

| | |
|-----------------|-------------|
| Product Number: | 102215 |
| Lot Number: | 501312 |
| Expiration: | 2-Jan-2019 |
| Platform(s): | HD-1 & SR-X |



Data below represents results generated on the Simoa™ HD-1 Analyzer.

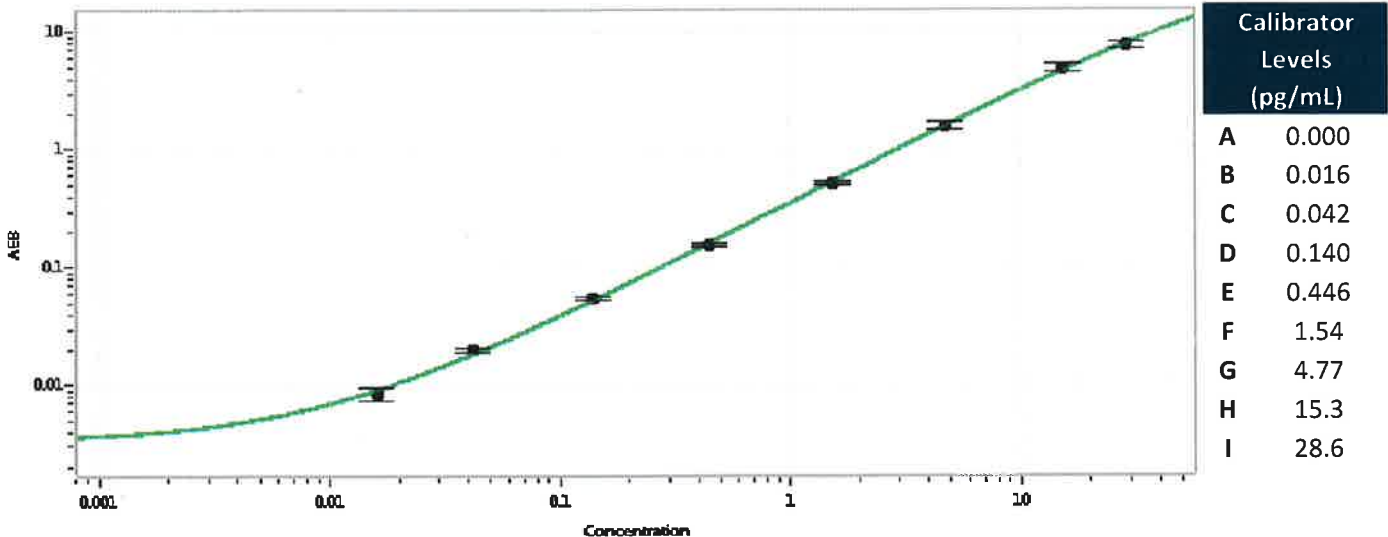
| Component | Part Number | Lot Number |
|------------------|---------------|------------------|
| Bead Reagent | 102211 | 818304 |
| Detector Reagent | 102212 | 818602 |
| SBG Reagent | 102213 | 818305 |
| Sample Diluent | 102214 | 818307 |
| Calibrators | 101310 | 81511/81783 |
| Controls | 100702-100703 | 81512 |
| RGP Reagent | 103159 | N/A ¹ |

¹ RGP is not Kit Lot Specific

| Release Materials* | | | |
|--------------------|--------------|----------------|--------------------|
| | Lot | Result (pg/mL) | Mean Range (pg/mL) |
| Control 1 | 81512 | 0.148 | 0.116-0.174 |
| Control 2 | 81512 | 17.1 | 12.3-19.5 |
| Panel 1 | MF-092217-01 | 0.300 | 0.177-0.353 |
| Panel 2 | MF-092217-02 | 2.89 | 1.99-3.51 |
| Panel 3 | MF-101117-01 | 18.9 | 12.8-20.8 |

* Ranges shown are generated internally for new lot release only. Customer should generate their own control ranges.

Calibration Curve



Review/Approval

Sivasankari Murugan
Name

QC Supervisor
Title

[Signature]
Signature/Date