

Product Number:	101160
Lot Number:	501875
Expiration:	13-Mar-2020
Platform(s):	HD-1/HD-x & SR-x



Data below represents results generated on the Simoa™ HD-1 Analyzer.

Component	Part Number	Lot Number
Bead Reagent †	101263	908701
Detector Reagent	101264	908702
SBG Reagent	101296	907212
Sample Diluent	103329	907211
Calibrators	103228	917201
Controls	103229-103230	917202
SBG Diluent (SR-X)††	103158	N/A <sup>1</sup>
RGP Reagent	103159	N/A <sup>1</sup>

† Follow the Simoa™ Cytokine 3-Plex A Advantage Kit Instructions (KI-0011 - HD1/KI-0101 - SR-X) to prepare the Bead Reagent.  
†† Specific for use on the SR-X platform - refer to the Simoa™ Cytokine 3-Plex A SR-X Kit Instructions (KI-0101).

<sup>1</sup> Reagents are not Kit Lot Specific

Release Materials			
<b>IL-6</b>			
	Lot	Result (pg/mL)	Mean Range (pg/mL)
Control 1	917202	0.826	0.612-0.918
Control 2	917202	22.0	12.8-23.1
Panel 2	MF-062818-02	0.970	0.775-1.16
Panel 3	MF-062818-03	1.61	1.38-2.08
Panel 4	MF-062818-04	13.4	10.3-15.5
<b>IL-10</b>			
	Lot	Result (pg/mL)	Mean Range (pg/mL)
Control 1	917202	0.578	0.435-0.653
Control 2	917202	12.1	6.34-15.0
Panel 2	MF-062818-02	12.5	9.37-15.8
Panel 3	MF-062818-03	0.513	0.393-0.769
Panel 4	MF-062818-04	1.22	0.995-1.49
<b>TNFα</b>			
	Lot	Result (pg/mL)	Mean Range (pg/mL)
Control 1	917202	2.74	2.03-3.04
Control 2	917202	68.5	40.3-74.3
Panel 2	MF-062818-02	2.21	1.52-2.43
Panel 3	MF-062818-03	36.5	31.9-47.8
Panel 4	MF-062818-04	7.32	5.48-8.22

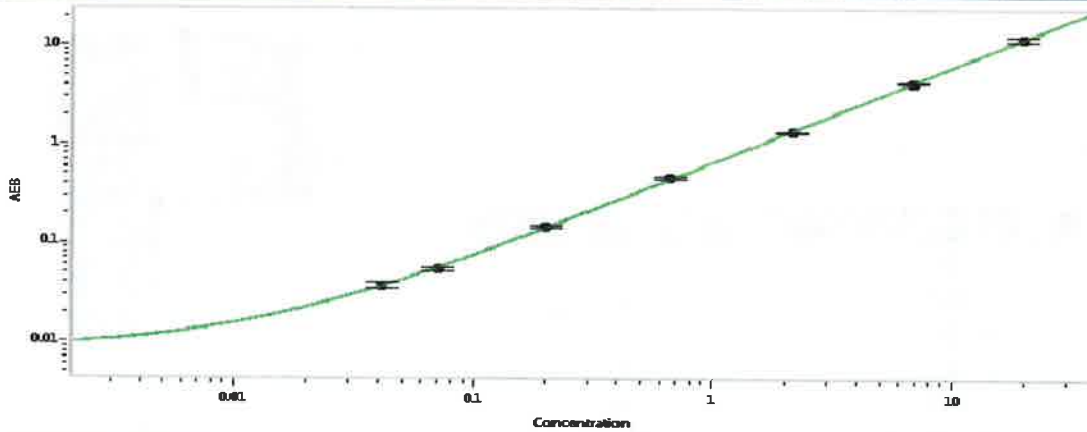
Ranges shown are generated internally for new lot release only.

Customer should generate their own control ranges.

Review/Approval: Daniel Ritchie Senior QC Analyst  
Name Title Signature/Date

\*Signing on behalf of Patrizia Stadler

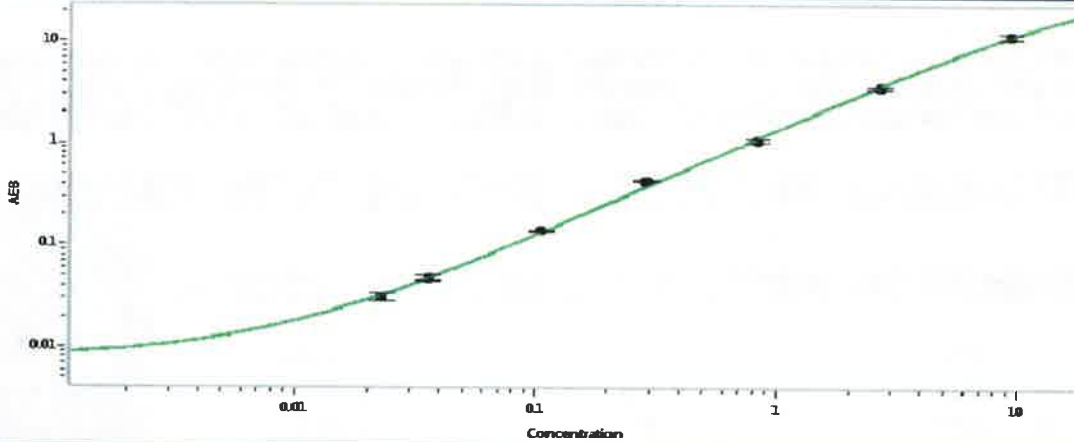
IL-6 Calibration Curve



Calibrator Levels  
(pg/mL)

A	0.000
B	0.041
C	0.071
D	0.199
E	0.658
F	2.13
G	6.82
H	19.6

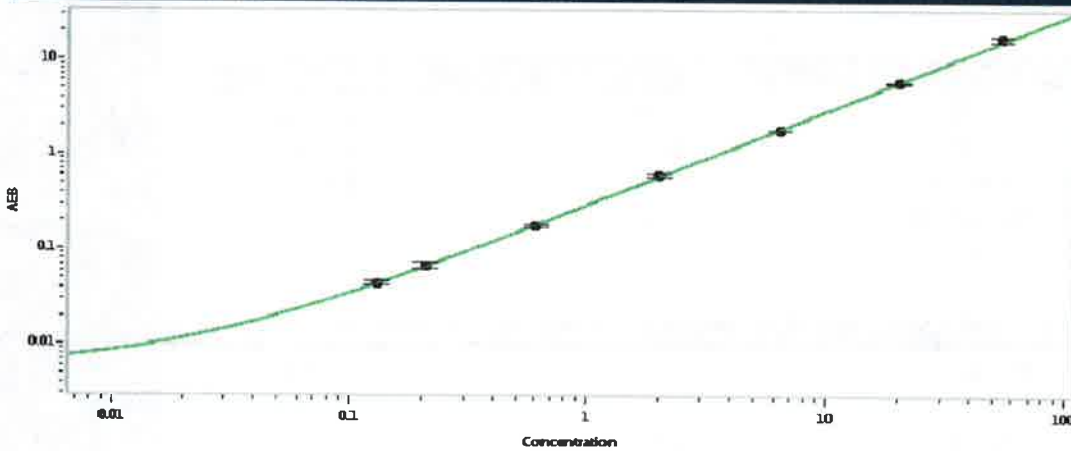
IL-10 Calibration Curve



Calibrator Levels  
(pg/mL)

A	0.000
B	0.023
C	0.036
D	0.106
E	0.292
F	0.837
G	2.71
H	9.41

TNFα Calibration Curve



Calibrator Levels  
(pg/mL)

A	0.000
B	0.130
C	0.207
D	0.606
E	2.00
F	6.42
G	20.3
H	54.7